

CALL 859-881-3765 TODAY!

ADC Fuse Platform #PWX-041RCK4XXYSPWP

**\$250
each**



**NEW in
BOX**

PowerWorx® Select Series Fuse Platform

Standard front and rear access with two-hole compression lug input, and 4 KLM per bus fuse configuration

NTM20337/37 18 GHz frequency band

**Make
Offer**

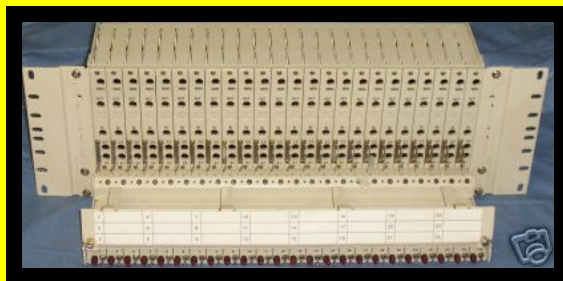


**Make
Offer**

**Mini Link Medium Capacity/ANSI provides a transmission link for 4-16xDS1
RAU 1 Unit**

DSX4F - 24MBT - E01C

**\$1500
each**



**\$1500
each**

24-termination loaded front cross-connect chassis (19" or 23")