

INDEX OF SHEETS

0-0	COVER SHEET
0-1	CODE SUMMARY
0-2	LISTS AND SCHEDULES
1-0	EXTERIOR ELEVATION "A"
1-1	EXTERIOR ELEVATION "C"
1-2	EXTERIOR ELEVATIONS "B & D"
2-0	FLOOR PLAN
3-0	REFLECTED CEILING PLAN - ELECTRICAL
3-1	REFLECTED CEILING PLAN - MECHANICAL
4-0	INTERIOR ELEVATION "A"
4-1	INTERIOR ELEVATION "C"
4-2	INTERIOR ELEVATIONS "B & D"
5-0	*ELECTRICAL SCHEMATIC
5-1	LOW VOLTAGE WIRING
6-0	*FOUNDATION PLAN
6-1	PIER FOUNDATION PLAN
7-0	CABLE TRAY DETAILS
7-1	*GROUNDING DETAILS
S0-0	STRUCTURAL SPECIFICATIONS
S1-0	FINISH DETAILS
S1-1	STRUCTURAL DETAILS
S2-0	STRUCTURAL LAYOUT - FLOOR
S3-0	STRUCTURAL LAYOUT - ROOF
S4-0	STRUCTURAL LAYOUT - SIDE PANEL "A"
S4-1	STRUCTURAL LAYOUT - SIDE PANEL "C"
S4-2	STRUCTURAL LAYOUT - END PANELS "B & D"

* = DENOTES SHEETS WHICH MAY CONTAIN FIELDWORK

NOTE: NOT ALL SHEETS LISTED ABOVE ARE INCLUDED IN "CUSTOMER" SET

DESIGN PARAMETERS

ROOF LIVE LOAD: 136 PSF
 FLOOR LIVE LOAD: 252 PSF
 GROUND SNOW LOAD: 105 PSF
 WIND SPEED: 120 MPH/EXPOSURE D
 SEISMIC ZONE: 4
 CONCRETE f'c: 5000 PSI AT 28 DAYS
 CONCRETE UNIT WEIGHT: 110 PCF
 FIRE RATING: 2 HOUR
 MODEL MAY BE MIRROR IMAGE
 SEE SHEET 0-1 FOR CODE SUMMARY

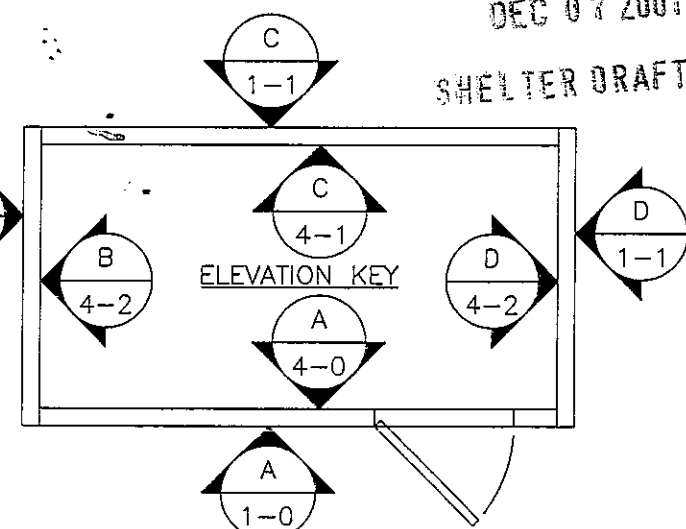
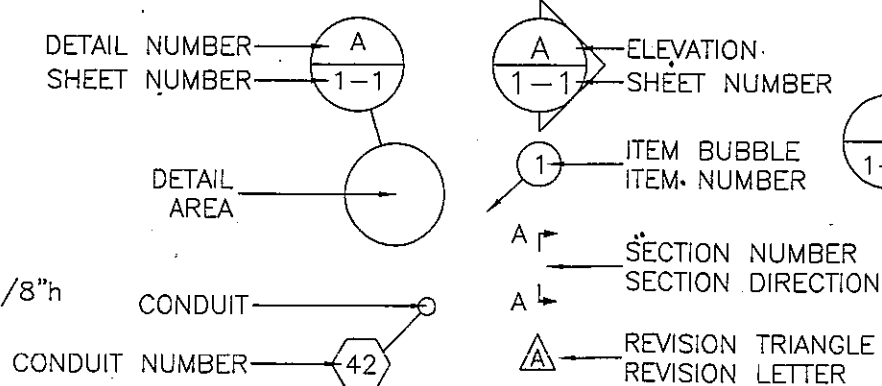
PHYSICAL PROPERTIES

SHELTER DIMENSIONS: 10'-0"w X 12'-0"
 SHIPPING DIMENSIONS: 10'-8"w X 12'-8" X 9'-3 1/2"
 INTERIOR DIMENSIONS: 8'-11 1/4"w X 10'-11 1/4" X 8'-1 7/8"
 SHELTER WEIGHT (AS SHIPPED): 24,500 #

ABBREVIATIONS

A	AMPS	MFG	MANUFACTURER
@	AT	MISC	MISCELLANEOUS
BCW	BARE COPPER WIRE	NEC	NATIONAL ELECTRIC CODE
BLK	BLACK	NEG	NEGATIVE
BLU	BLUE	NEMA	NATIONAL ELECTRIC MANUFACTURER'S ASSOCIATION
BRN	BROWN	NOM	NOMINAL
BLDG	BUILDING	NO	NOMINALLY OPEN
BOCA	BUILDING OFFICIALS CODE ADMINISTRATION	NC	NOMINALLY CLOSED
C	CENTERLINE	NTS	NOT TO SCALE
C/C	CENTER TO CENTER	OR	ORANGE
CKT	CIRCUIT	OD	OUTSIDE DIAMETER/OUTSIDE DIMENSION
CONC	CONCRETE	OSB	ORIENTED STRAND BOARD
CU YD	CUBIC YARD	P	POLE
DIA	DIAMETER	PDC	POWER DISTRIBUTION CABINET
DIM	DIMENSION	POS	POSITIVE
DP	DOUBLE POLE	LB	POUND (S)
DPOT	DOUBLE POLE DOUBLE THROW	PSF	POUNDS PER SQUARE FOOT
DPST	DOUBLE POLE SINGLE THROW	PSI	POUNDS PER SQUARE INCH
DT	DOUBLE THROW	QTY	QUANTITY
DWG	DRAWING	RECPT	RECEPTACLE
EA	EACH	RECT	RECTIFIER
EGR	EQUIPMENT GROUND RING	REBAR	REINFORCING STEEL BAR
ELEC	ELECTRIC/ELECTRICAL	REQ'D.	REQUIRED
EMT	ELECTRICAL METALLIC TUBING	REV	REVISION
ENT	ELECTRICAL NON-METALLIC TUBING	R	RIGHT
ELEV	ELEVATION	RH	RIGHT HAND
EQUIP	EQUIPMENT	SHT	SHEET
EXT	EXTERIOR	1Ø	SINGLE PHASE
FMLC	FLEXIBLE METALLIC LIQUID TIGHT CONDUIT	SPDT	SINGLE POLE DOUBLE THROW
FNLC	FLEXIBLE NON-METALLIC LIQUID TIGHT CONDUIT	SPST	SINGLE POLE SINGLE THROW
FND	FOUNDATION	SW	SINGLE POLE SWITCH
FRP	FIBERGLASS REINFORCED POLYESTER	SQ FT	SQUARE FEET
GALV	GALVANIZED	SQ IN	SQUARE INCH
GEN	GENERATOR	STD	STANDARD
GRN	GREEN	SBC	STANDARD BUILDING CODE
GND	GROUND	SW	SWITCH
GFCI	GROUND FAULT CIRCUIT INTERRUPTER	TEMP	TEMPERATURE
HVAC	HEATING, VENTILATION, AND AIR CONDITIONING	TSTAT	THERMOSTAT
HOR	HORIZONTAL	3Ø	THREE PHASE
IAW	IN ACCORDANCE WITH	3P	THREE POLE
IN	INCH	3W	THREE WIRE
ID	INSIDE DIAMETER/INSIDE DIMENSION	TYP	TYPICAL
INSUL	INSULATION	UL	UNDERWRITERS LABORATORIES INC.
INT	INTERIOR	UBC	UNIFORM BUILDING CODE
IMC	INTERNATIONAL MECHANICAL CODE	UMC	UNIFORM MECHANICAL CODE
IPC	INTERNATIONAL PLUMBING CODE	VENT	VENTILATION
IG	ISOLATED GROUND	V	VOLT
JB	JUNCTION BOX	W	WATTS
KW	KILOWATT	WP	WEATHER PROOF
KO	KNOCKOUT	WLD	WELDED
L	LEFT	WWF	WELDED WIRE FABRIC
LH	LEFT HAND	WHT	WHITE
LTG	LIGHT/LIGHTNING	W/O	WITH
LL	LIVE LOAD	YEL	WITHOUT
LV	LOW VOLTAGE		YELLOW

SYMBOLS



CONFIDENTIAL
 DEC 07 2001
 SHELTER DRAFTING

ENGINEER SEAL

THIS DRAWING IS THE CONFIDENTIAL PROPERTY AND CONTAINS TRADE SECRETS OF CELLXION, LLC. ANY USE OF THESE DRAWINGS OR THE INFORMATION CONTAINED HEREIN FOR ANY REASON OTHER THAN AS EXPRESSLY AUTHORIZED BY CELLXION, LLC. IS STRICTLY PROHIBITED. THIS DRAWING HAS BEEN DISTRIBUTED WITH THE UNDERSTANDING THAT ANYONE RECEIVING OR OTHERWISE OBTAINING POSSESSION OF IT WILL BE EXPRESSLY NOTIFIED OF ITS CONFIDENTIAL NATURE.

Cellxion
 Solutions for the Wireless Industry
 5031 Hazel Jones Road
 Bossier City, Louisiana 71111
 voice: (318) 213-2900
 fax: (318) 213-2919
 www.cellxion.com

CUSTOMER:

NORTH STAR TECHNOLOGY

PROJECT:
10'-0" X 12'-0" CONCRETE SHELTER COVER SHEET

FILENAME: NSR02/SNSR020-0	
SCALE: N.T.S.	TOLERANCE:
DRWN. BY: S. MARTIN	DATE: 11/04/01
CHK. BY: V. HASSELL	DATE: 11/04/01
ENG. BY: K. BARNETT	DATE: 11/04/01
APP. BY: J. HOOD	DATE: 11/04/01
SHEET NO.: 0-0	PART NO.:
DRAWING NO.: SNSR02	REV: B

A	MRC	11/12/01	ADDED PIER FOUNDATION TO INDEX OF SHEETS	VGH	11/12/01	
REV	BY	DATE	DESCRIPTION	APP	BY	DATE

STATE	CODE SUMMARY	USE GROUP	CONST. TYPE
ALABAMA	1997 STANDARD BUILDING CODE 1997 STANDARD MECHANICAL CODE 1996 NATIONAL ELECTRICAL CODE	S-2	VI-UNP
ALASKA	1997 UNIFORM BUILDING CODE 1997 UNIFORM MECHANICAL CODE 1996 NATIONAL ELECTRICAL CODE	S-2	V-N
ARIZONA	1997 UNIFORM BUILDING CODE 1997 UNIFORM MECHANICAL CODE 1999 NATIONAL ELECTRICAL CODE	S-2	V-N
ARKANSAS	1997 STANDARD BUILDING CODE 1997 STANDARD MECHANICAL CODE 1999 NATIONAL ELECTRICAL CODE	S-2	VI-UNP
CALIFORNIA	1997 UNIFORM BUILDING CODE 1997 UNIFORM MECHANICAL CODE 1996 NATIONAL ELECTRICAL CODE CALIFORNIA TITLE 25	S-2	V-N
COLORADO	1997 UNIFORM BUILDING CODE 1997 UNIFORM MECHANICAL CODE 1999 NATIONAL ELECTRICAL CODE	S-2	V-N
CONNECTICUT	1996 BOCA NATIONAL BUILDING CODE 1996 CT BASIC BUILDING CODE SUPPLEMENT 1996 INTERNATIONAL MECHANICAL CODE 1999 NATIONAL ELECTRICAL CODE	B	5B
DELAWARE	1993 BOCA NATIONAL BUILDING CODE 1993 BOCA MECHANICAL CODE 1996 NATIONAL ELECTRICAL CODE	B	5B
DISTRICT OF COLUMBIA	1990 BOCA NATIONAL BUILDING CODE 1990 INTERNATIONAL MECHANICAL CODE 1993 NATIONAL ELECTRICAL CODE	B	5B
FLORIDA	1997 STANDARD BUILDING CODE 1997 STANDARD MECHANICAL CODE 1996 NATIONAL ELECTRICAL CODE	S-2	VI-UNP
GEORGIA	2000 STANDARD BUILDING CODE WITH GA AMEND. 2000 STANDARD MECHANICAL CODE 1999 NATIONAL ELECTRICAL CODE	S-2	VI-UNP
IDAHO	1997 UNIFORM BUILDING CODE 1997 UNIFORM MECHANICAL CODE 1999 NATIONAL ELECTRICAL CODE	S-2	V-N
ILLINOIS	1996 BOCA NATIONAL BUILDING CODE 1996 INTERNATIONAL MECHANICAL CODE 1999 NATIONAL ELECTRICAL CODE	B	5B
INDIANA	2000 INTERNATIONAL BUILDING CODE 2000 INTERNATIONAL MECHANICAL CODE 1999 NATIONAL ELECTRICAL CODE	S-2	V-N
IOWA	1994 UNIFORM BUILDING CODE 1994 UNIFORM MECHANICAL CODE 1996 NATIONAL ELECTRICAL CODE	S-2	V-N
KANSAS	1997 UNIFORM BUILDING CODE 1997 UNIFORM MECHANICAL CODE 1996 NATIONAL ELECTRICAL CODE	S-2	V-N
KENTUCKY	1997 KENTUCKY BUILDING CODE 1996 BOCA NATIONAL MECHANICAL CODE 1999 NATIONAL ELECTRICAL CODE	B	5B
LOUISIANA	1994 STANDARD BUILDING CODE 1994 STANDARD MECHANICAL CODE 1999 NATIONAL ELECTRICAL CODE	S-2	VI-UNP

STATE	CODE SUMMARY	USE GROUP	CONST. TYPE
MAINE	1993 BOCA NATIONAL BUILDING CODE 1993 BOCA MECHANICAL CODE 1996 NATIONAL ELECTRICAL CODE	B	5B
MARYLAND	2000 INTERNATIONAL BUILDING CODE W/ MOD. 2000 INTERNATIONAL MECHANICAL CODE 2000 INTERNATIONAL PLUMBING CODE 1999 NATIONAL ELECTRICAL CODE	B	5B
MASSACHUSETTS	6TH MA STANDARD BUILDING CODE 1999 NATIONAL ELECTRICAL CODE		
MICHIGAN	2000 INTERNATIONAL BUILDING CODE 2000 INTERNATIONAL MECHANICAL CODE 1999 NATIONAL ELECTRICAL CODE	B	5B
MINNESOTA	1997 UNIFORM BUILDING CODE W/ AMEND. 1994 UNIFORM MECHANICAL CODE W/ AMEND. 1999 NATIONAL ELECTRICAL CODE	S-2	V-N
MISSISSIPPI	1997 STANDARD BUILDING CODE 1997 STANDARD MECHANICAL CODE 1996 NATIONAL ELECTRICAL CODE	S-2	VI-UNP
MISSOURI	1988 UNIFORM BUILDING CODE 1988 UNIFORM MECHANICAL CODE 1987 NATIONAL ELECTRICAL CODE	S-2	V-N
MONTANA	1997 UNIFORM BUILDING CODE 1997 UNIFORM MECHANICAL CODE 1999 NATIONAL ELECTRICAL CODE	S-2	V-N
NEBRASKA	1991 UNIFORM BUILDING CODE 1991 UNIFORM MECHANICAL CODE 1999 NATIONAL ELECTRICAL CODE	S-2	V-N
NEVADA	1994 UNIFORM BUILDING CODE 1994 UNIFORM MECHANICAL CODE 1996 NATIONAL ELECTRICAL CODE	S-2	V-N
NEW HAMPSHIRE	1999 BOCA NATIONAL BUILDING CODE 1993 BOCA NATIONAL MECHANICAL CODE 1999 NATIONAL ELECTRICAL CODE	B	5B
NEW JERSEY	1996 BOCA NATIONAL BUILDING CODE 1998 INTERNATIONAL MECHANICAL CODE 1999 NATIONAL ELECTRICAL CODE	B	5B
NEW MEXICO	1997 UNIFORM BUILDING CODE 1997 UNIFORM MECHANICAL CODE 1999 NATIONAL ELECTRICAL CODE	S-2	V-N
NEW YORK	1984 NY STATE UNIFORM FIRE PROTECTION & STATE BUILDING CODE WITH 1992 SUPPLEMENTS 1993 NATIONAL ELECTRICAL CODE	B	5B
NORTH CAROLINA	1996 NC STANDARD BUILDING CODE WITH 1996/97/98/99 REV., VOL. I, III 1996 NATIONAL ELECTRICAL CODE WITH 1999 REV, VOL. IV	S-2	VI-UNP
NORTH DAKOTA	1997 UNIFORM BUILDING CODE 1997 UNIFORM MECHANICAL CODE 1999 NATIONAL ELECTRICAL CODE	S-2	V-N
OHIO	1998 OHIO BASIC BUILDING CODE 1999 BOCA NATIONAL BUILDING CODE 1998 INTERNATIONAL MECHANICAL CODE 1999 NATIONAL ELECTRICAL CODE	S-2	5B

STATE	CODE SUMMARY	USE GROUP	CONST. TYPE
OKLAHOMA	1997 UNIFORM BUILDING CODE 1997 UNIFORM MECHANICAL CODE 1999 NATIONAL ELECTRICAL CODE	S-2	V-N
OREGON	1997 UNIFORM BUILDING CODE W/ AMEND. 1998 INTERNATIONAL MECH. CODE W/ AMEND. 1999 NATIONAL ELECTRICAL CODE 1998 OREGON STRUCTURAL SPECIALTY CODE 1999 OREGON STATE MECHANICAL CODE	S-2	V-N
PENNSYLVANIA	1996 BOCA NATIONAL BUILDING CODE 1996 INTERNATIONAL MECHANICAL CODE 1996 NATIONAL ELECTRICAL CODE	B	5B
RHODE ISLAND	1997 RHODE ISLAND BUILDING CODE 1997 RHODE ISLAND MECHANICAL CODE 1999 NATIONAL ELECTRICAL CODE	B	5B
SOUTH CAROLINA	2000 INTERNATIONAL BUILDING CODE 2000 INTERNATIONAL MECHANICAL CODE 1999 NATIONAL ELECTRICAL CODE	S-2	VI-UNP
SOUTH DAKOTA	1997 UNIFORM BUILDING CODE 1997 UNIFORM MECHANICAL CODE 1999 NATIONAL ELECTRICAL CODE	S-2	V-N
TENNESSEE	1999 STANDARD BUILDING CODE (SBC) 1999 STANDARD MECHANICAL CODE (SMC) 2000 FIRE PROTECTION CODE (NFPA)	S-2	VI-UNP
TEXAS	1997 UNIFORM BUILDING CODE 1997 STANDARD BUILDING CODE 1998 INTERNATIONAL MECHANICAL CODE 1999 NATIONAL ELECTRICAL CODE	S-2 B	V-N VI-UNP
UTAH	1997 UNIFORM BUILDING CODE 1998 INTERNATIONAL MECHANICAL CODE 1999 NATIONAL ELECTRICAL CODE	S-2	V-N
VERMONT	1990 BOCA NATIONAL BUILDING CODE 1990 BOCA NATIONAL MECHANICAL CODE 1996 NATIONAL ELECTRICAL CODE	B	5B
VIRGINIA	1996 BOCA NATIONAL BUILDING CODE 1996 INTERNATIONAL MECHANICAL CODE 1996 NATIONAL ELECTRICAL CODE	B	5B
WASHINGTON	1997 UNIFORM BUILDING CODE 1997 UNIFORM MECHANICAL CODE 1999 NATIONAL ELECTRICAL CODE	B	V-N
WEST VIRGINIA	1996 BOCA NATIONAL BUILDING CODE 1996 INTERNATIONAL MECHANICAL CODE 1996 NATIONAL ELECTRICAL CODE	B	5B
WISCONSIN	1997 UNIFORM BUILDING CODE WISCONSIN STANDARD BUILDING CODE 1996 NATIONAL ELECTRICAL CODE	S-2	V-N
WYOMING	1997 UNIFORM BUILDING CODE 1997 UNIFORM MECHANICAL CODE 1999 NATIONAL ELECTRICAL CODE	S-2	V-N

ENGINEER SEAL

THIS DRAWING IS THE CONFIDENTIAL PROPERTY AND CONTAINS TRADE SECRETS OF CELLIXION, LLC. ANY USE OF THESE DRAWINGS OR THE INFORMATION CONTAINED HEREIN FOR ANY REASON OTHER THAN AS EXPRESSLY AUTHORIZED BY CELLIXION, LLC. IS STRICTLY PROHIBITED. THIS DRAWING HAS BEEN DISTRIBUTED WITH THE UNDERSTANDING THAT ANYONE RECEIVING OR OTHERWISE OBTAINING POSSESSION OF IT WILL BE EXPRESSLY NOTIFIED OF ITS CONFIDENTIAL NATURE.

Cellixion
Solutions for the Wireless Industry

5031 Hazel Jones Road
Bossier City, Louisiana 71111
voice: (318) 213-2900
fax: (318) 213-2919
www.cellixion.com

CUSTOMER:
NORTH STAR TECHNOLOGY

PROJECT:
10'-0" X 12'-0" CONCRETE SHELTER CODE SUMMARY

SEAL

I hereby certify that this engineering document was prepared by me or my direct supervision and that I am a duly licensed professional Engineer under the laws of the State of Iowa.

signature _____ date _____

Printed or typed name _____

My license renewal date is December 31, _____

Pages or sheets covered by my seal: _____

Date issued: _____

OFFICIAL USE ONLY

- NOTES
1. THIS SHELTER NOT INTENDED FOR HUMAN HABITATION
 2. OCCUPANT LOAD = 0, OHIO = 2
 3. SPECIAL CONDITIONS: N/A
 4. PERMISSIBLE TYPES OF GASES: N/A
 5. SHELTER IS DESIGN TO MEET HIGHER SNOW AND WIND LOADS. SHELTER HAS NO COUNTY PLACEMENT RESTRICTION IN THE STATE OF MARYLAND.
 6. STATE INSIGNIA LABEL/DECAL IS LOCATED NEAR MAIN ELECTRICAL SERVICE PANEL.

CONFIDENTIAL

DEC 07 2001

SHELTER DRAFTING

FILENAME:
NSR02/SNSR020-1

SCALE: N.T.S. TOLERANCE:

DRWN. BY: S. MARTIN DATE: 11/04/01

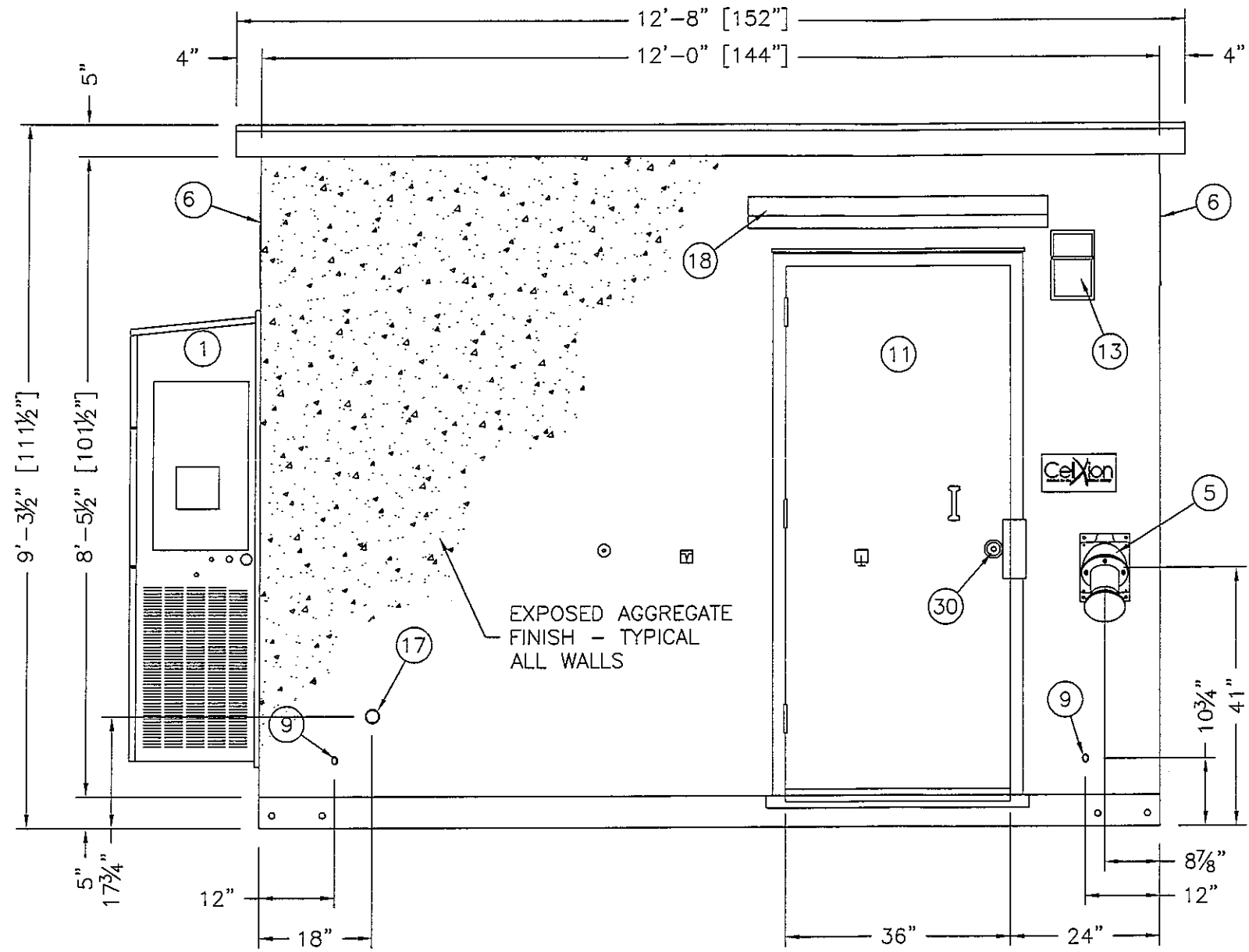
CHK. BY: V. HASSELL DATE: 11/04/01

ENG. BY: K. BARNETT DATE: 11/04/01

APP. BY: J. HOOD DATE: 11/04/01

SHEET NO.: 0-1 PART NO.:

DRAWING NO.: SNSR02 REV: B



EXTERIOR ELEVATION "A"

CONFIDENTIAL
DEC 07 2001
SHELTER DRAFTING

ENGINEER SEAL

THIS DRAWING IS THE CONFIDENTIAL PROPERTY AND CONTAINS TRADE SECRETS OF CELLXION, LLC. ANY USE OF THESE DRAWINGS OR THE INFORMATION CONTAINED HEREIN FOR ANY REASON OTHER THAN AS EXPRESSLY AUTHORIZED BY CELLXION, LLC. IS STRICTLY PROHIBITED. THIS DRAWING HAS BEEN DISTRIBUTED WITH THE UNDERSTANDING THAT ANYONE RECEIVING OR OTHERWISE OBTAINING POSSESSION OF IT WILL BE EXPRESSLY NOTIFIED OF ITS CONFIDENTIAL NATURE.

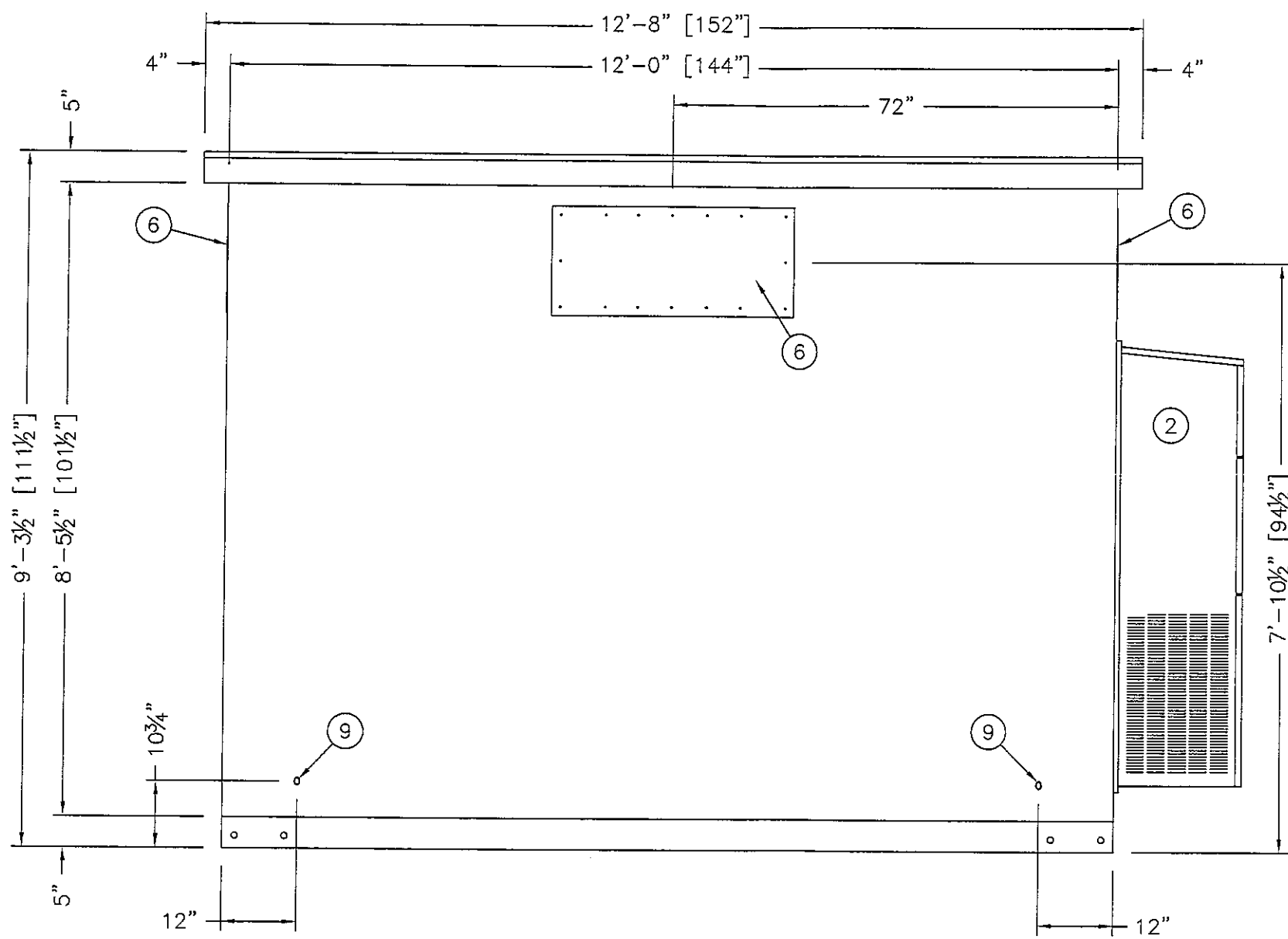
Cellxion
Solutions for the Wireless Industry
5031 Hazel Jones Road
Bossier City, Louisiana 71111
voice: (318) 213-2900
fax: (318) 213-2919
www.cellxion.com

CUSTOMER:

NORTH STAR TECHNOLOGY

PROJECT:
10'-0" X 12'-0"
CONCRETE SHELTER
EXTERIOR ELEVATION "A"

FILENAME: NSR02/SNSR021-0	
SCALE: 1/2"=1'-0"	TOLERANCE:
DRWN. BY: V. HASSELL	DATE: 11/2/01
CHK. BY: V. HASSELL	DATE: 11/2/01
ENG. BY: K. BARNETT	DATE: 11/2/01
APP. BY: J. HOOD	DATE: 11/2/01
SHEET NO.:	PART NO.:
1-0	
DRAWING NO.:	REV:
SNSR02	B



EXTERIOR ELEVATION "C"

CONFIDENTIAL
 DEC 9 7 2001
 SHELTER DRAFTING

ENGINEER SEAL

THIS DRAWING IS THE CONFIDENTIAL PROPERTY AND CONTAINS TRADE SECRETS OF CELLXION, LLC. ANY USE OF THESE DRAWINGS OR THE INFORMATION CONTAINED HEREIN FOR ANY REASON OTHER THAN AS EXPRESSLY AUTHORIZED BY CELLXION, LLC. IS STRICTLY PROHIBITED. THIS DRAWING HAS BEEN DISTRIBUTED WITH THE UNDERSTANDING THAT ANYONE RECEIVING OR OTHERWISE OBTAINING POSSESSION OF IT WILL BE EXPRESSLY NOTIFIED OF ITS CONFIDENTIAL NATURE.

Cellxion
 Solutions for the Wireless Industry
 5031 Hazel Jones Road
 Bossier City, Louisiana 71111
 voice: (318) 213-2900
 fax: (318) 213-2919
 www.cellxion.com

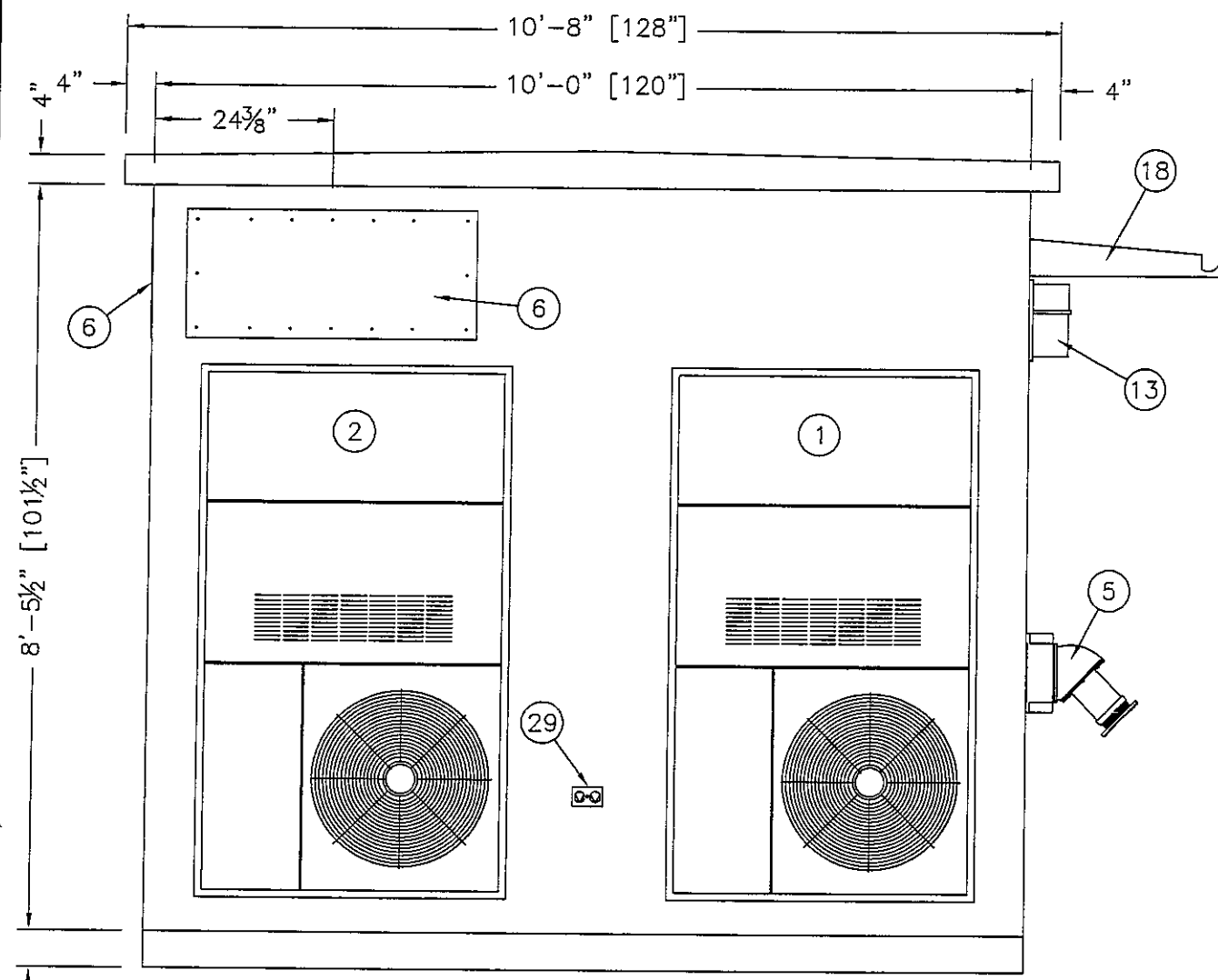
CUSTOMER:

NORTH STAR
 TECHNOLOGY

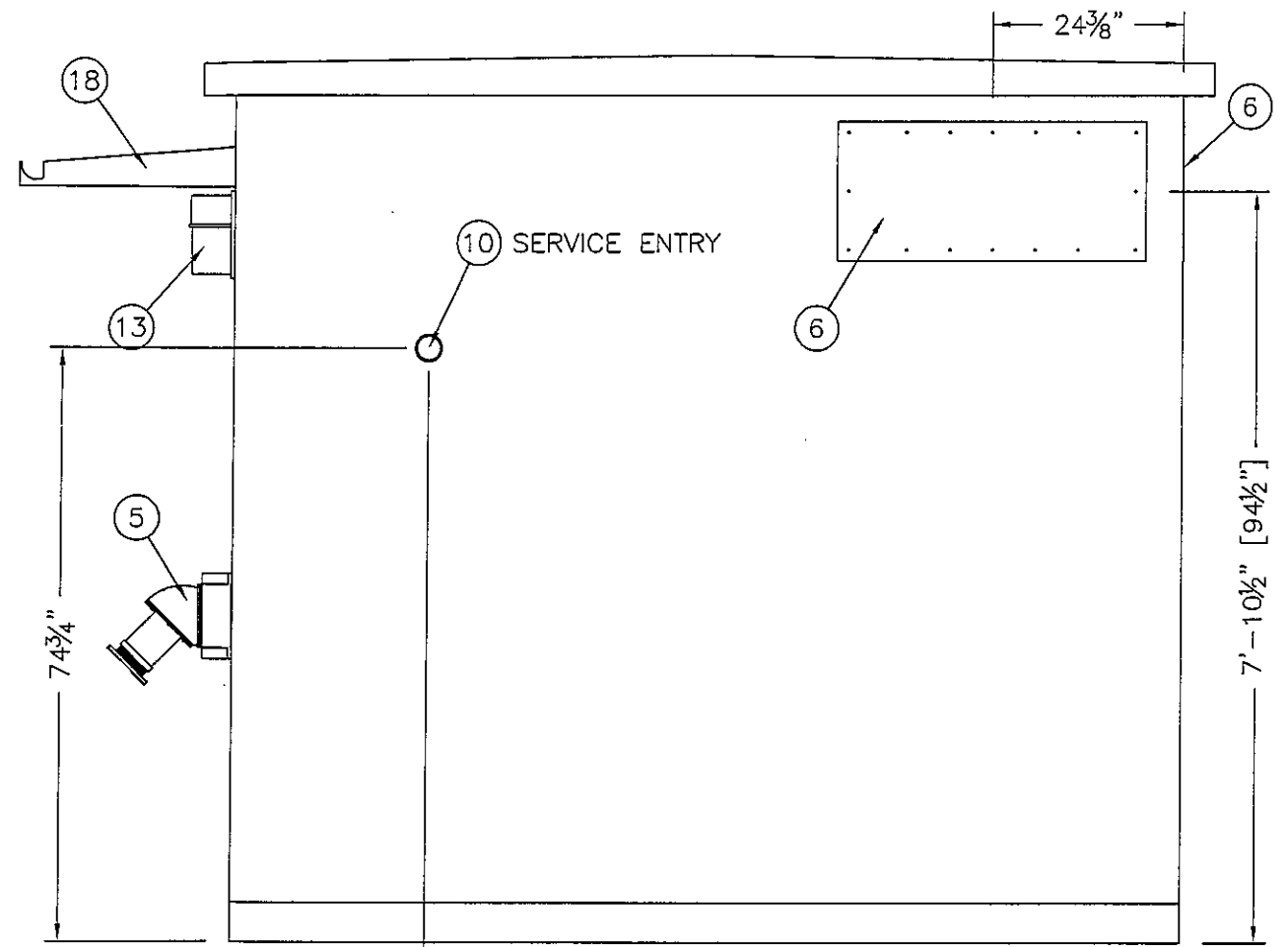
PROJECT:

10'-0" X 12'-0"
 CONCRETE SHELTER,
 EXTERIOR ELEVATION "C"

FILENAME: NSR02/SNSR021-1	
SCALE: 1/2"=1'-0"	TOLERANCE:
DRWN. BY: V. HASSELL	DATE: 11/2/01
CHK. BY: V. HASSELL	DATE: 11/2/01
ENG. BY: K. BARNETT	DATE: 11/2/01
APP. BY: J. HOOD	DATE: 11/2/01
SHEET NO.: 1-1	PART NO.:
DRAWING NO.: SNSR02	REV: B



EXTERIOR ELEVATION "B"



EXTERIOR ELEVATION "D"

ENGINEER SEAL

THIS DRAWING IS THE CONFIDENTIAL PROPERTY AND CONTAINS TRADE SECRETS OF CELLXION, LLC. ANY USE OF THESE DRAWINGS OR THE INFORMATION CONTAINED HEREIN FOR ANY REASON OTHER THAN AS EXPRESSLY AUTHORIZED BY CELLXION, LLC. IS STRICTLY PROHIBITED. THIS DRAWING HAS BEEN DISTRIBUTED WITH THE UNDERSTANDING THAT ANYONE RECEIVING OR OTHERWISE OBTAINING POSSESSION OF IT WILL BE EXPRESSLY NOTIFIED OF ITS CONFIDENTIAL NATURE.

Cellxion
Solutions for the Wireless Industry

5031 Hazel Jones Road
Bossier City, Louisiana 71111
voice: (318) 213-2900
fax: (318) 213-2919
www.cellxion.com

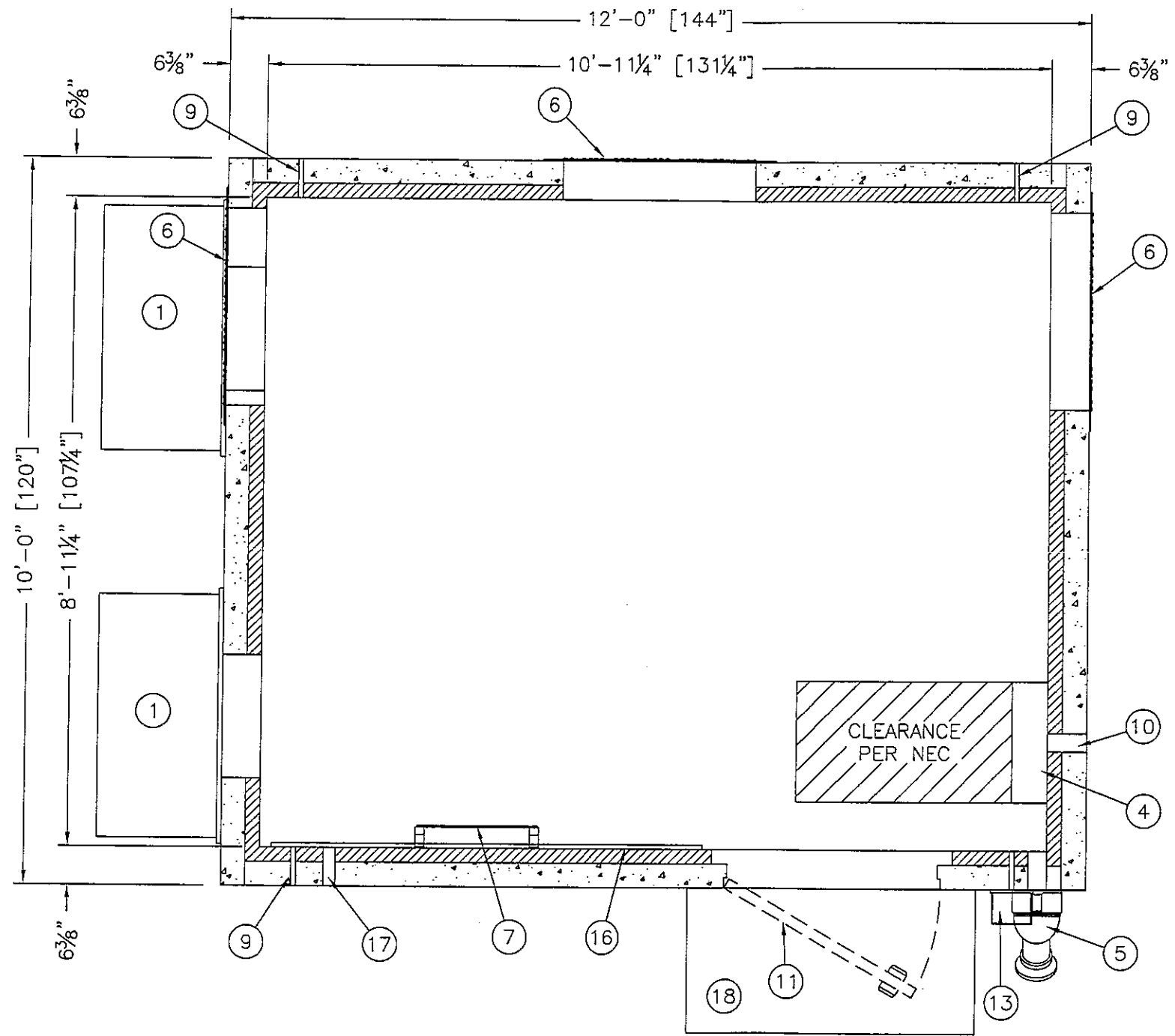
CUSTOMER:

NORTH STAR TECHNOLOGY

PROJECT:
10'-0" X 12'-0"
CONCRETE SHELTER
EXTERIOR ELEVATIONS
"B & D"

FILENAME: SNSR02/SNSR021-2	
SCALE: 1/2"=1'-0"	TOLERANCE:
DRWN. BY: V. HASSELL	DATE: 11/2/01
CHK. BY: V. HASSELL	DATE: 11/2/01
ENG. BY: K. BARNETT	DATE: 11/2/01
APP. BY: J. HOOD	DATE: 11/2/01
SHEET NO.: 1-2	PART NO.:
DRAWING NO.: SNSR02	REV: B

CONFIDENTIAL
DEC 07 2001
SHELTER DRAFTING



FLOOR PLAN
 120.00 SQ. FT. EXTERIOR
 97.75 SQ. FT. INTERIOR

CONFIDENTIAL
 DEC 07 2001
 SHELTER DRAFTING

ENGINEER SEAL

THIS DRAWING IS THE CONFIDENTIAL PROPERTY AND CONTAINS TRADE SECRETS OF CELLXION, LLC. ANY USE OF THESE DRAWINGS OR THE INFORMATION CONTAINED HEREIN FOR ANY REASON OTHER THAN AS EXPRESSLY AUTHORIZED BY CELLXION, LLC. IS STRICTLY PROHIBITED. THIS DRAWING HAS BEEN DISTRIBUTED WITH THE UNDERSTANDING THAT ANYONE RECEIVING OR OTHERWISE OBTAINING POSSESSION OF IT WILL BE EXPRESSLY NOTIFIED OF ITS CONFIDENTIAL NATURE.

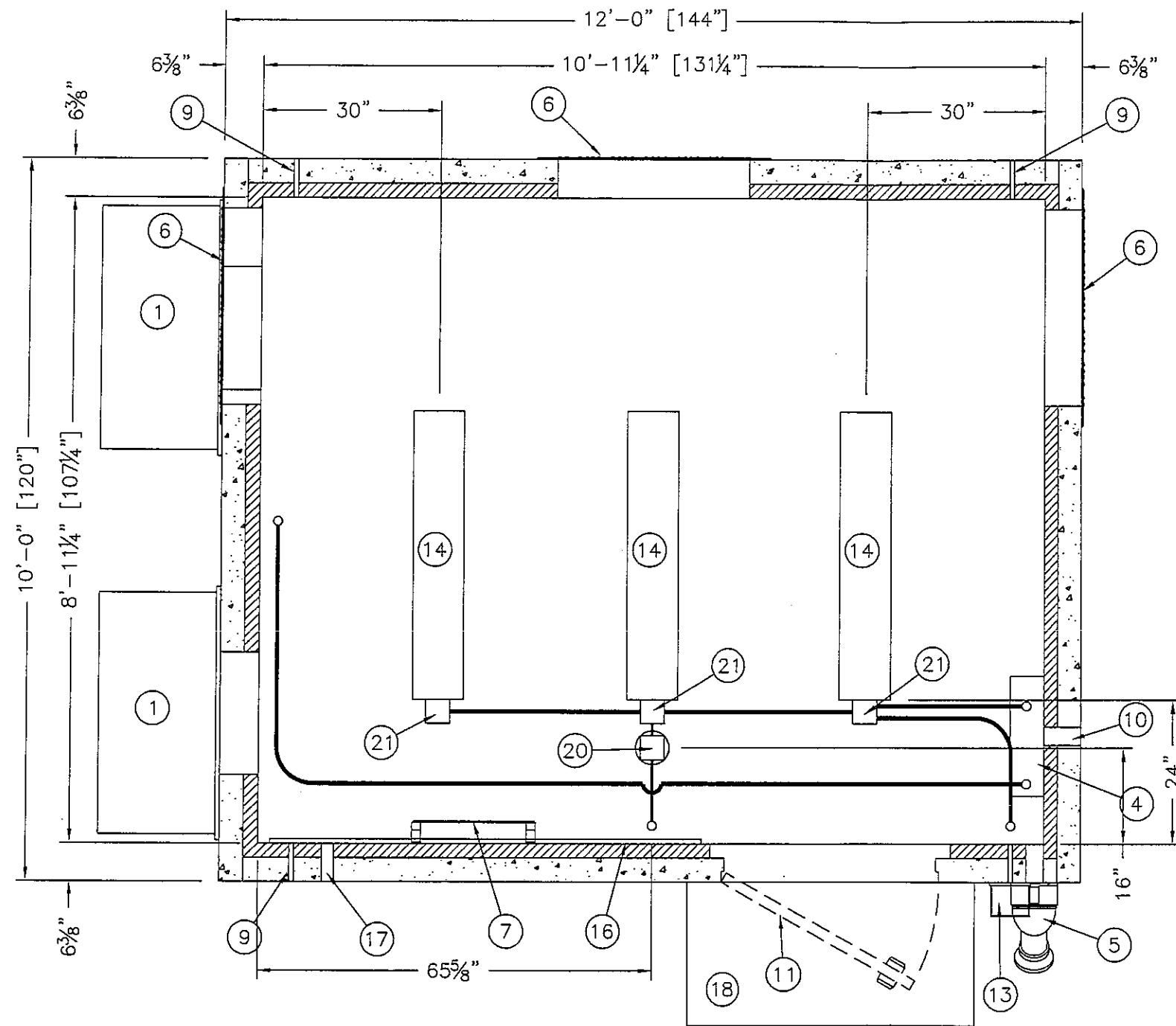
Cellxion
 Solutions for the Wireless Industry

5031 Hazel Jones Road
 Bossier City, Louisiana 71111
 voice: (318) 213-2900
 fax: (318) 213-2919
 www.cellxion.com

CUSTOMER:
NORTH STAR TECHNOLOGY

PROJECT:
10'-0" X 12'-0" CONCRETE SHELTER FLOOR PLAN

FILENAME: NSR02/SNSR022-0	
SCALE: 1/2"=1'-0"	TOLERANCE:
DRWN. BY: V. HASSELL	DATE: 11/2/01
CHK. BY: V. HASSELL	DATE: 11/2/01
ENG. BY: K. BARNETT	DATE: 11/2/01
APP. BY: J. HOOD	DATE: 11/2/01
SHEET NO.: 2-0	PART NO.:
DRAWING NO.: SNSR02	REV: B



CEILING VIEW - ELECTRICAL

NOTES:

1. ALL CONDUIT TO BE 3/4" EMT, UNLESS OTHERWISE NOTED.
2. PLACEMENT OF ELECTRICAL EQUIPMENT TO BE DETERMINED BY AVAILABILITY OF PREMADE KNOCKOUTS OR PENETRATION REQUIREMENTS.

LEGEND:

1. — LV — = LOW VOLTAGE CONDUIT TO BE 1/2" EMT UNLESS OTHERWISE NOTED.
2. — GND — = HALO GROUND AND DROPS TO BE #2 STRANDED GREEN COPPER WIRE.

ENGINEER SEAL

THIS DRAWING IS THE CONFIDENTIAL PROPERTY AND CONTAINS TRADE SECRETS OF CELLXION, LLC. ANY USE OF THESE DRAWINGS OR THE INFORMATION CONTAINED HEREIN FOR ANY REASON OTHER THAN AS EXPRESSLY AUTHORIZED BY CELLXION, LLC. IS STRICTLY PROHIBITED. THIS DRAWING HAS BEEN DISTRIBUTED WITH THE UNDERSTANDING THAT ANYONE RECEIVING OR OTHERWISE OBTAINING POSSESSION OF IT WILL BE EXPRESSLY NOTIFIED OF ITS CONFIDENTIAL NATURE.

Cellxion
Solutions for the Wireless Industry

5031 Hazel Jones Road
Bossier City, Louisiana 71111
voice: (318) 213-2900
fax: (318) 213-2919
www.cellxion.com

CUSTOMER:

NORTH STAR TECHNOLOGY

PROJECT:
10'-0" X 12'-0"
CONCRETE SHELTER
CEILING VIEW
ELECTRICAL

FILENAME: NSR02/SNSR023-0	
SCALE: 1/2"=1'-0"	TOLERANCE:
DRWN. BY: V. HASSELL	DATE: 11/2/01
CHK. BY: V. HASSELL	DATE: 11/2/01
ENG. BY: K. BARNETT	DATE: 11/2/01
APP. BY: J. HOOD	DATE: 11/2/01
SHEET NO.: 3-0	PART NO.:
DRAWING NO.: SNSR02	REV: B